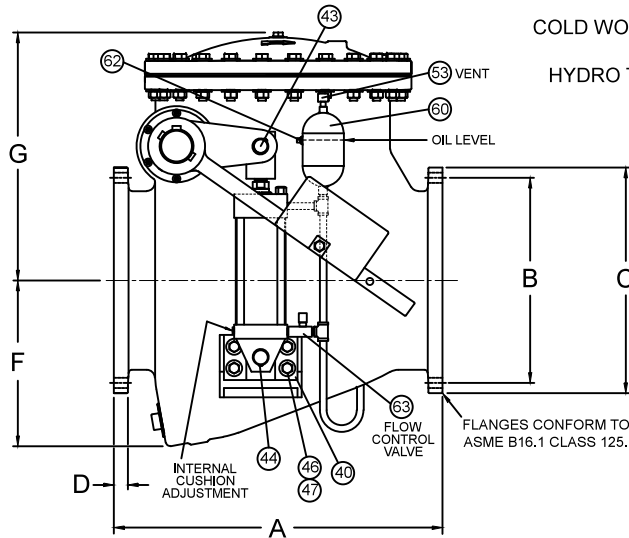
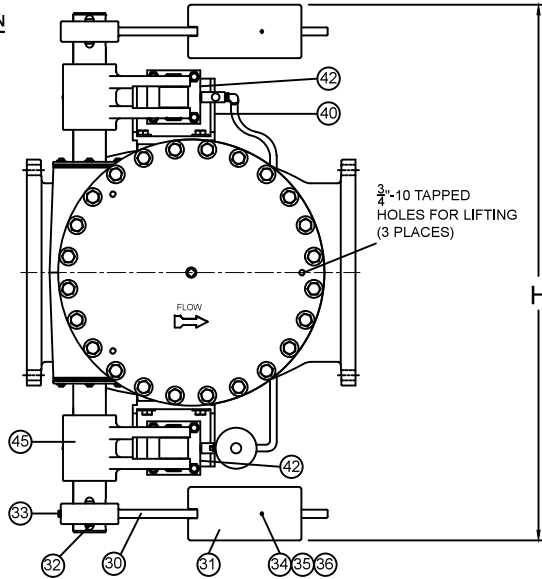


2-STAGE OIL CUSHION PRINCIPLE OF OPERATION

During closure, the oil cylinder controls the speed of closure in two stages:

1. As the check valve closes, oil from the bottom port of the cylinder is controlled by the Flow Control Valve (63), typically 2 to 5 seconds.
2. During the last 10% of travel, the closure is controlled using the internal cushion adjustment, typically 1 to 3 seconds.



COLD WORKING PRESSURE
150 PSI
HYDRO TEST PRESSURE
300 PSI

SEE DRAWING VM-7920S2-M FOR STANDARD MATERIALS OF CONSTRUCTION

| DIMENSIONS, INCHES | | | | | | | |
|--------------------|-------|-------|-------|------|-------|-------|-------|
| VALVE SIZE | A | B | C | D | F | G | H |
| 20 | 40.00 | 25.00 | 27.50 | 1.68 | 20.50 | 30.25 | 65.25 |

Revised 8-28-14 (Rev 1)

20" SWING CHECK VALVE WITH SIDE MOUNTED 2-STAGE OIL CUSHION

DATE 2-21-13



VALVE AND MANUFACTURING CORP.

DRWG. NO.

VMC-7920S2